

Customer Intelligent Terminal System

Business window is the most important place for face-to-face communication between enterprises and customers, where they can handle business, promote products, listening to customers and enhance their image.

Wintek M8 Customer Intelligent Terminal system is a leading solution for business window info integration. It uses Android OS, has touch screen LCD display of different size, can enter info ,evaluate service, monitor evaluation process, can display the content of M8 on pc synchronically, can broadcast TTS voice, release notice and info, play adverting video or pictures at certain time; at the same time, it can extend some practical APP dynamically, such as opinion survey, customer complaints etc, thus to solve some problems that business windows had encountered effectively so as to improve the service evaluation of the business windows to a higher level.

Core Functions



Info Input

Data input/Customer evaluation
/audio and video collection

Info Output

Info Display/TTS Voice
Broadcast/Screen-synchronization

Info displaying

Audio and Video displaying/Release
Notice &Announcement

Application Expansion

Weather Report/Opinion Survey
Complaint/Info Query
More.....

Product advantages

integration

Solve the data input and output issue that business windows or teller counter encountered, get rid of password keyboard, double-screen display, promotional cards, etc. More concise, more efficient with better service and promotion

High-performance

Cortex-A9 dual-core processor, five point touch IPS high-resolution LCD screen, Android 4.1 OS, beautiful appearance, modern manufacture, strict quality testing system.

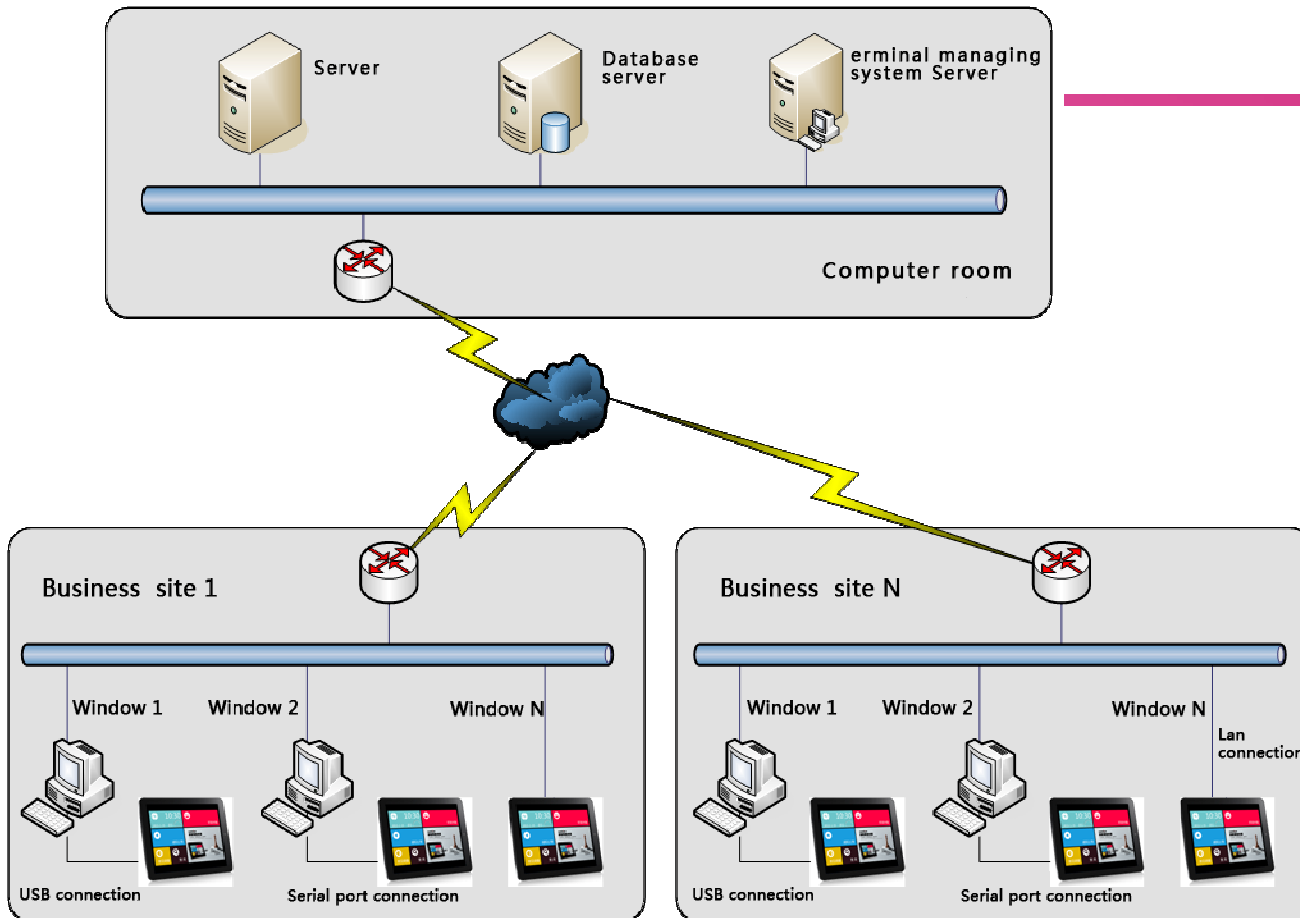
modularization

All those applications such as service evaluation, password input, TTS voice broadcast, promotion and display etc can be loaded dynamically. Customers can decide if use those apps or not via management system

Extension

As it adopts modularized design, when customers have new request, we only need to develop and load a new application on it. It is easy to do new extension. So far there are more than 20 applications to choose.

Typology



【Note :】 when Wintek M8 Customer Intelligent Terminal connect to pc or client side through serial port , or when it connects to LAN directly through RJ45 interface, Wintek communication suite need to be installed.

Technical Parameter

Main Technical parameter of Wintek M8 Customer Intelligent Terminal:

Core device	1.5GHz dual-core CPU , 1G RAM , 16G Flash hard disk
Output device	8 inch or 9.7 inch IPS LCD screen , 1024X768 resolution
Input device	5 touch capacitive screen
Gravity sensor	Support horizontal and vertical status
OS	Android 4.1
Communication interface	USB2.0/WiFi/RJ45 network interface (RJ45 need to be expanded through Wintek communication suite)
Host Stand	Optional
Host dimension	8 inch : 198mm(L)X158mm(W)X9.8mm(T) 9.7inch : 244mm(L)X191mm(W)X9.8mm(T)
Power	Voltage : DC 5V 2A , Power consumption : ≤10W.
Other	Include one power adapter